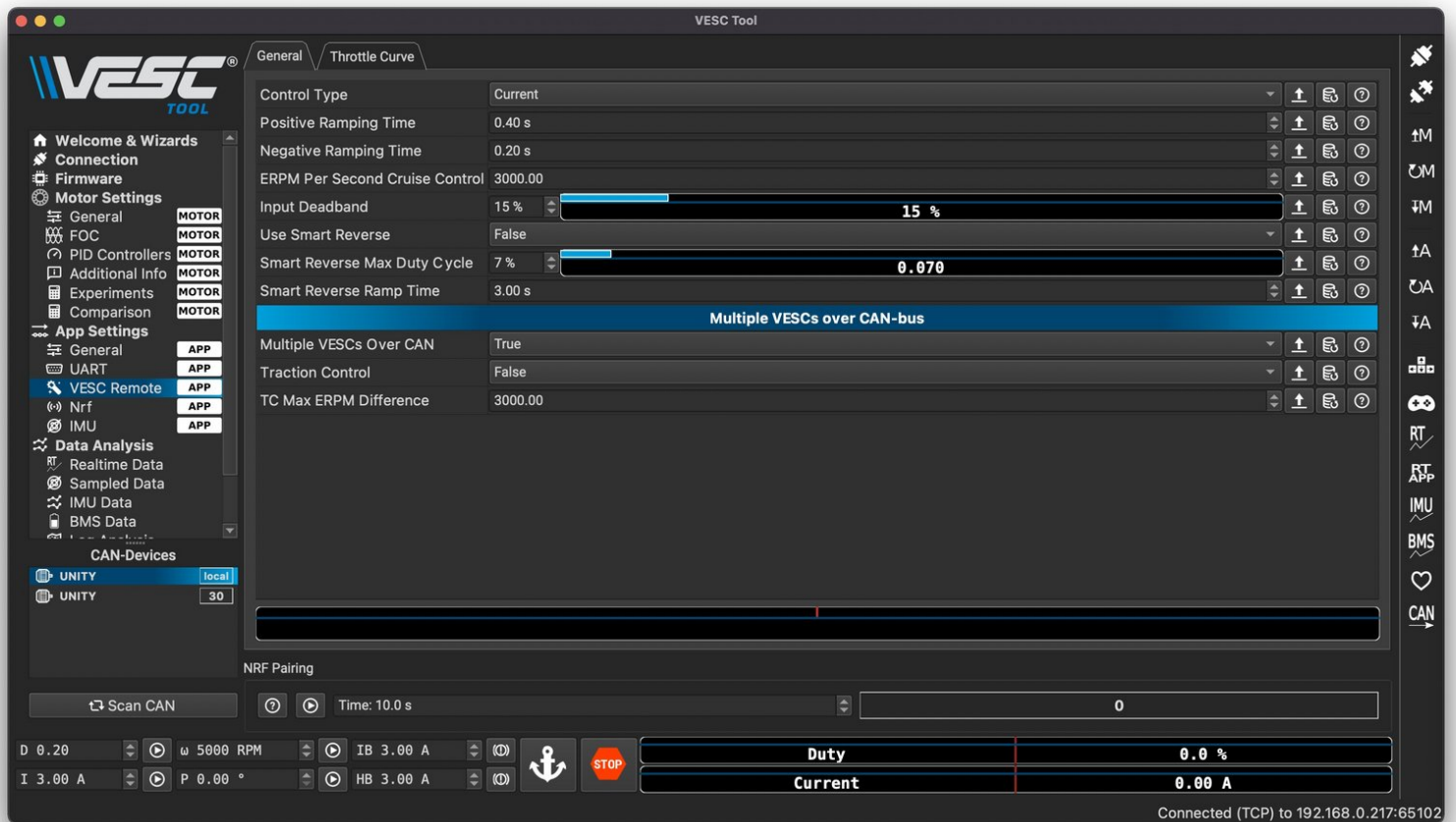


buildkitboards

How To Setup The Voyager Remote

How To Setup The Voyager Remote

Written By: Jared Ebersole



TOOLS:

- [VESC Tool](#) (1)

Software

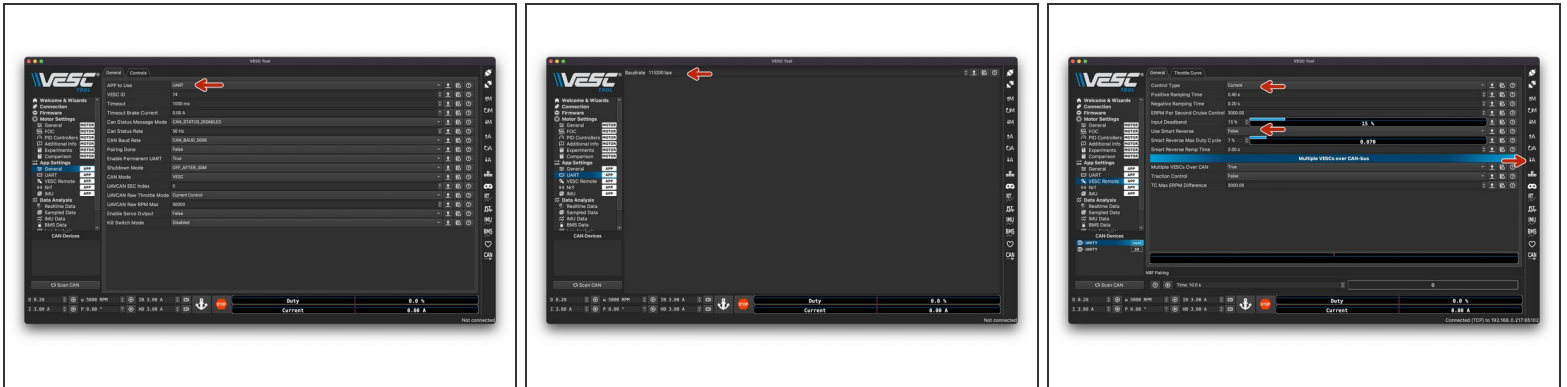
https://vesc-project.com/vesc_tool

- [Hot Glue](#) (1)
-

PARTS:

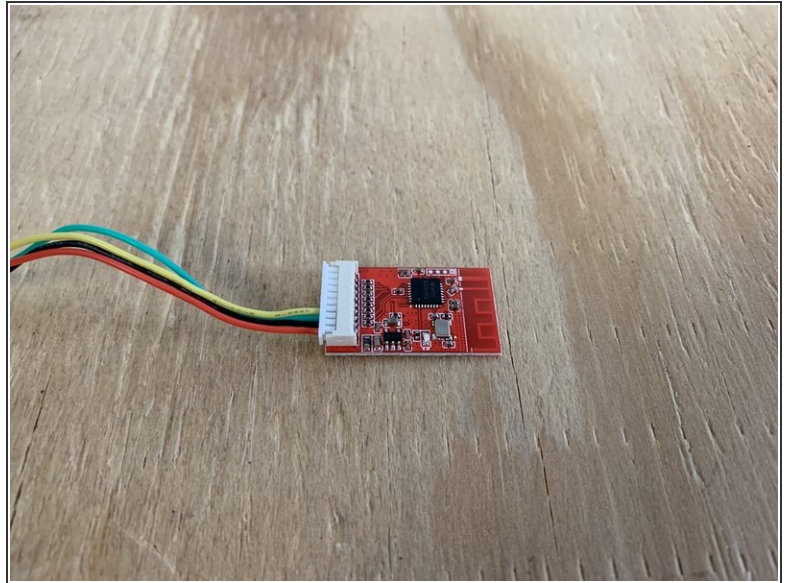
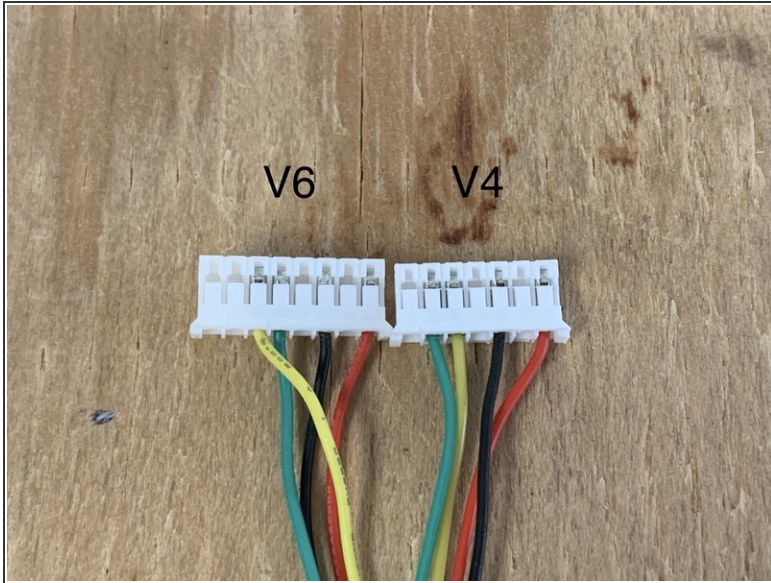
- [Voyager Remote](#) (1)

Step 1 — Programming the ESC



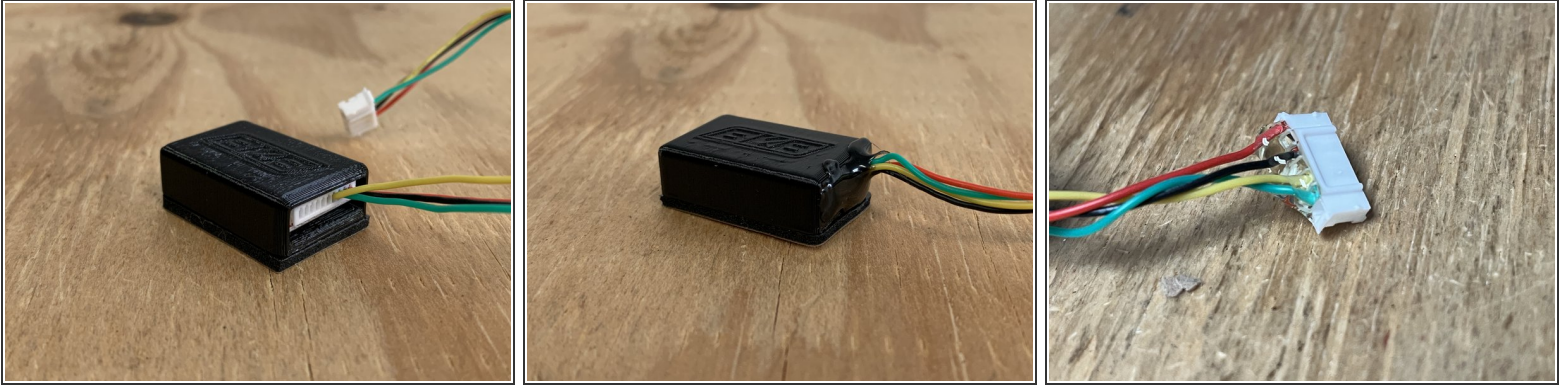
- Use the VESC Tool FW5.3 to connect to your ESC
- Under the App settings -> General tab change the control mode to **UART**
- Under the App settings -> UART tab set the baud rate is set to **115200**
- Under the App settings -> VESC Remote tab set the Control Type to **Current** and Use Smart Reverse to **False**
- Apply the settings to the ESC by pressing the down arrow A. If you have any trouble writing the settings to the ESC, unplug the receiver.

Step 2 — Preparing the Receiver



- Choose the correct cable depending if you have a V4 or V6 ESC
- Carefully plug the cable into the receiver. There are two small blocks on the cable, they should face down and the pins should face up

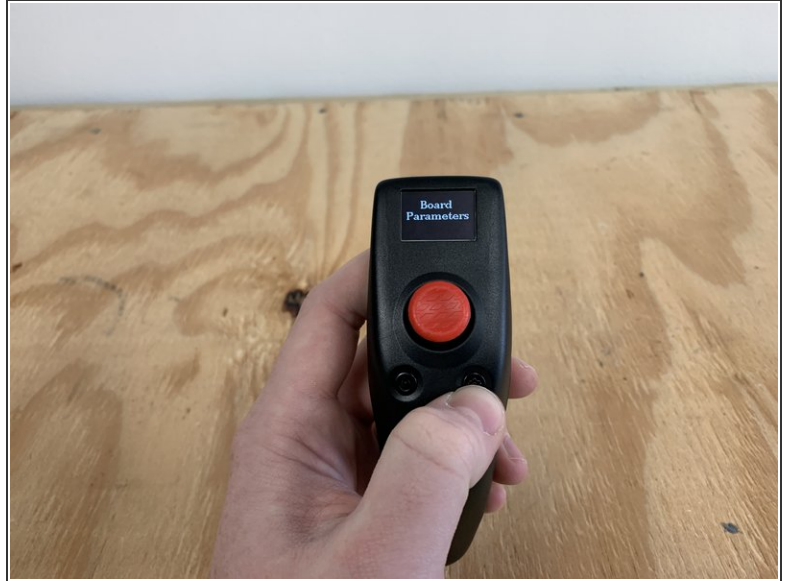
Step 3 — Preparing the Receiver



- Place the receiver inside the 3d printed housing. UPDATE: We now provide shrink wrap instead of the 3D printed housing.
- Fill the gap with hot glue, and secure the connection from the cable to the plug with the hot glue.
- Add hot glue to the connector that plugs into the VESC
- UPDATED: If using shrink wrap, use a heat gun or hairdryer to shrink the wrap around the PCB. Be careful, too much heat will make the hot glue liquid again.

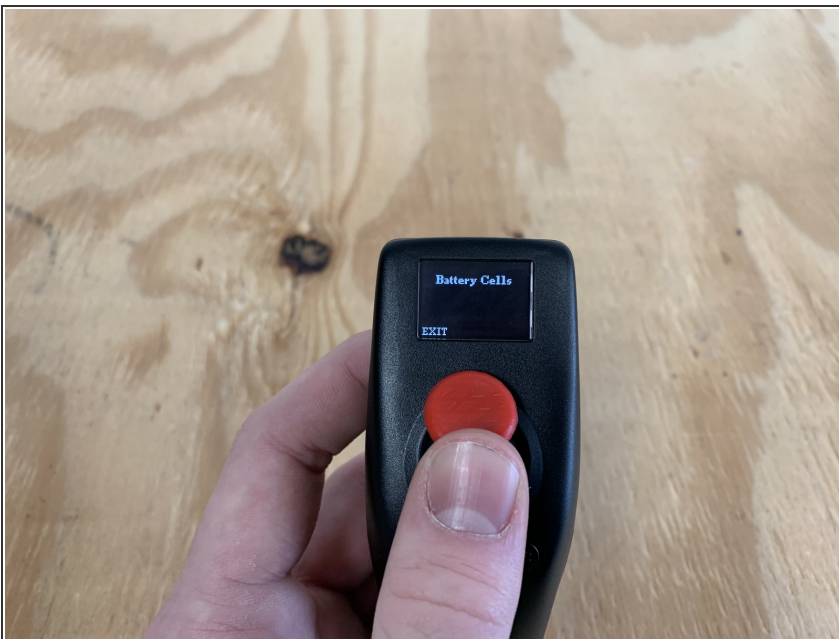
⚠ Adding hot glue to **BOTH** ends of the connector is very important

Step 4 — Setting up the remote



- Turn the remote on by pressing and holding the power button (left)
- Go into the settings menu by pressing and holding the settings button

Step 5



- Here is where you will customize the settings of the remote
- Click ENTER (right button) to open the board parameter settings
- Move the joystick up and down to select a setting you want to modify. Then click ENTER
- Move the joystick up and down to adjust the value. Then press EXIT when the value is set properly
- Adjust all of the settings in the Board Parameters Menu

Step 6 — Setting up the remote



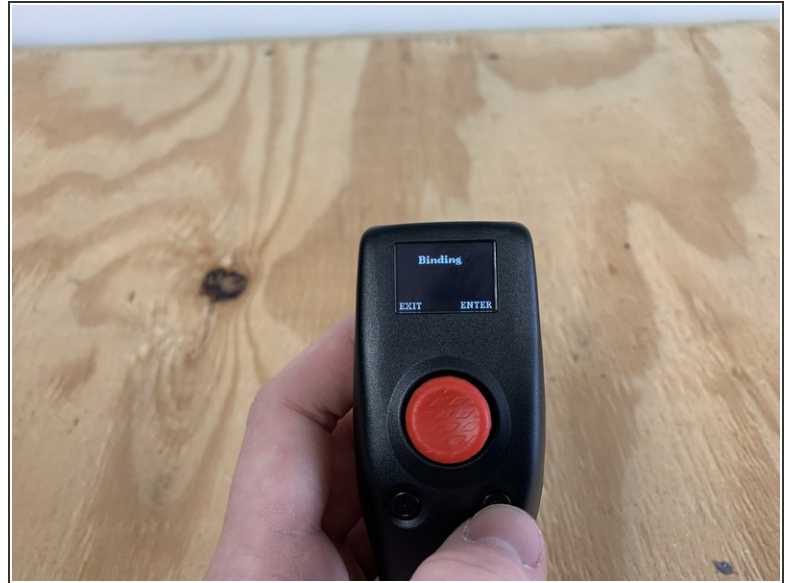
- Then click EXIT to return to the main menu. Navigate to the REMOTE CONFIG menu. Press ENTER
- Navigate to the GEAR CALIBRATION setting. Press enter.
- Apply full throttle (forward) and full brake (backward) to the joystick. Repeat to do this twice
- Press and hold SAVE for two seconds

Step 7



- You can then navigate to the HIGH, MIDDLE, and LOW throttle settings. There are three acceleration modes on the remote. You can modify each value to adjust the % of acceleration for each mode

Step 8 — Setting up the remote



⚠ Ensure that the board / ESC is in the off position.

- Navigate back to the RECEIVER CONFIG area. Press ENTER
- Navigate to the BINDING setting. Press ENTER.
- Plugin the receiver to the ESC UART port (or turn on the board if you are re-pairing the remote).

Step 9 — Placing the receiver



- Remove the backing off of the gasket to stick the receiver box to the enclosure
- ⚠ **VERY IMPORTANT!!! Do NOT** place the receiver near any motor or battery wires. They can cause interference. Make sure the receiver is as far from any wires as possible.
- As seen in the photo, the receiver is on the opposite side of the power and motor wires.

Step 10



- Please checkout the [other Dozuki article](#) on how to use the remote