

buildkitboards

# How to install the V1.1 Heatsink on the Duo

How to install the V1.1 Heatsink on the Duo

Written By: Jared Ebersole





## TOOLS:

- [Utility Knife](#) (1)
- [Dremel \(or other cutting tool\)](#) (1)
- [2.5mm Allen Wrench](#) (1)

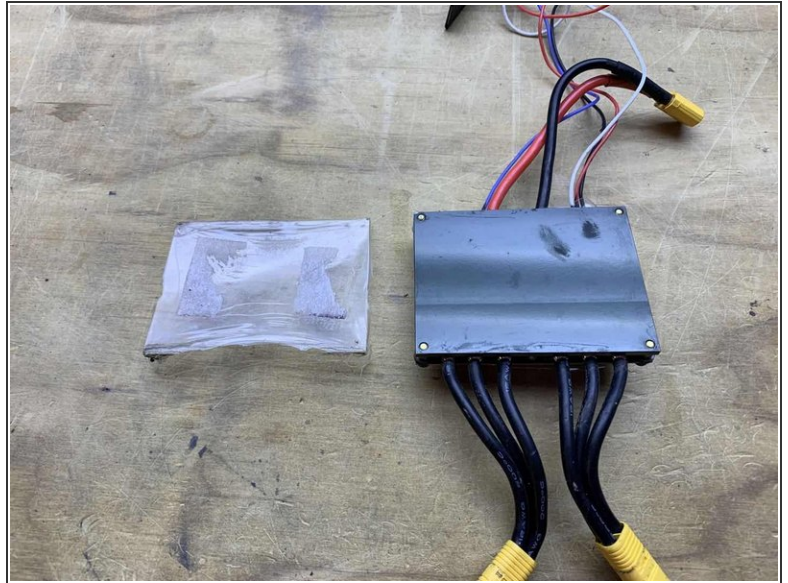


## PARTS:

- [BKB Duo Heatsink](#) (1)
- [M3x8 Screws](#) (2)



## Step 1 — How to install the V1.1 Heatsink on the Duo



- Gather the ESC and a utility knife
- Carefully cut out the bottom of the heatsink to remove the plastic

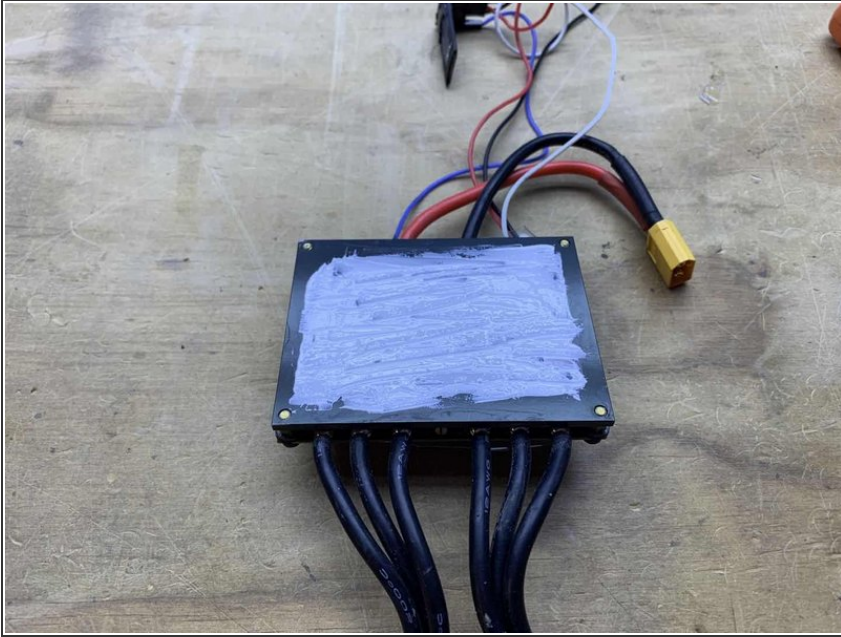
## Step 2



- Use a spare piece of cardboard and place ~ half of Part A onto the cardboard
- Place an equal amount (1:1) of Part B on the cardboard
- Mix the two thoroughly for 30 seconds

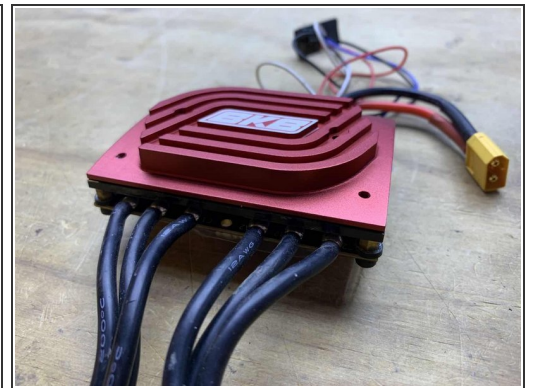
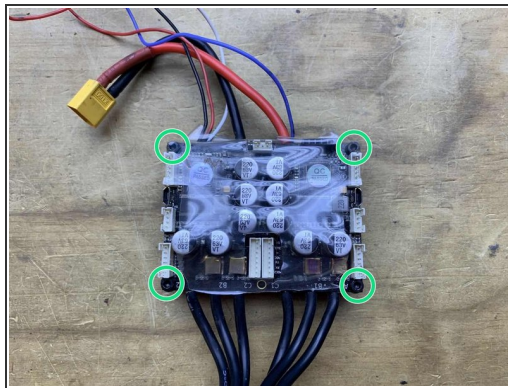
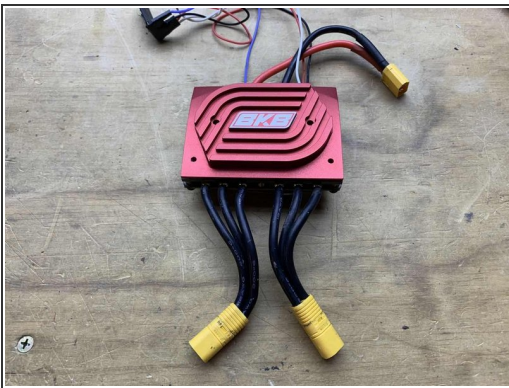


### Step 3



- Place a thin coating onto the ESC heatsink

### Step 4



- Place the external heatsink on the ESC with the two threaded holes facing downwards towards the motor wires
- Press firmly down on the four ESC bolts for 30 seconds (do not press on the ESC components)
- Flip the heatsink over and realign the edges

## Step 5



- Print the cutting guide attached at the bottom of the guide

**⚠ When printing make sure to select **ACTUAL SIZE****

- Cut out the shape you think would be easiest to use. There is one for the inside and outside of the enclosure

## Step 6



- Align the cutout to the enclosure. The flat area at the top should be ~2mm from the curved line in the enclosure
- Cut the shape and two holes using your preferred method (Dremel, etc)



## Step 7



**⚠ Make sure the adhesive is fully cured (12-24 hours) before securing it to the enclosure**

- Place the heatsink and ESC in the enclosure
- Secure with two M3x8 Bolts